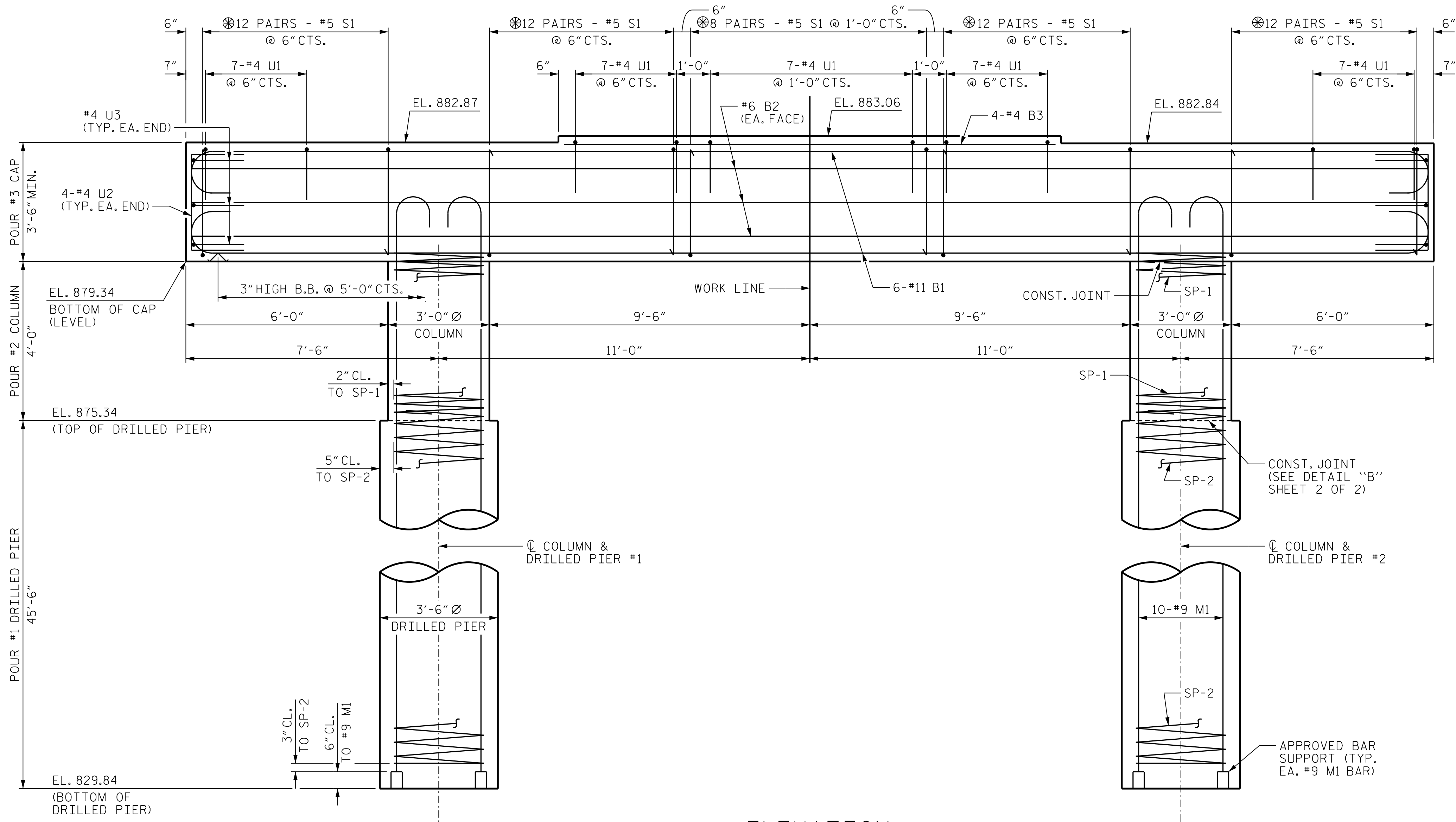


PLAN



ELEVATION

DIMENSIONS & REINFORCING STEEL ARE TYPICAL FOR EACH COLUMN & DRILLED PIER UNLESS OTHERWISE NOTED.

NOTES

STIRRUPS AND "U" BARS IN CAP MAY BE SHIFTED AS NECESSARY TO CLEAR ANCHOR BOLTS.

HOOKS ON "M" BARS MAY BE TURNED AS NECESSARY FOR PLACING REINFORCING STEEL.

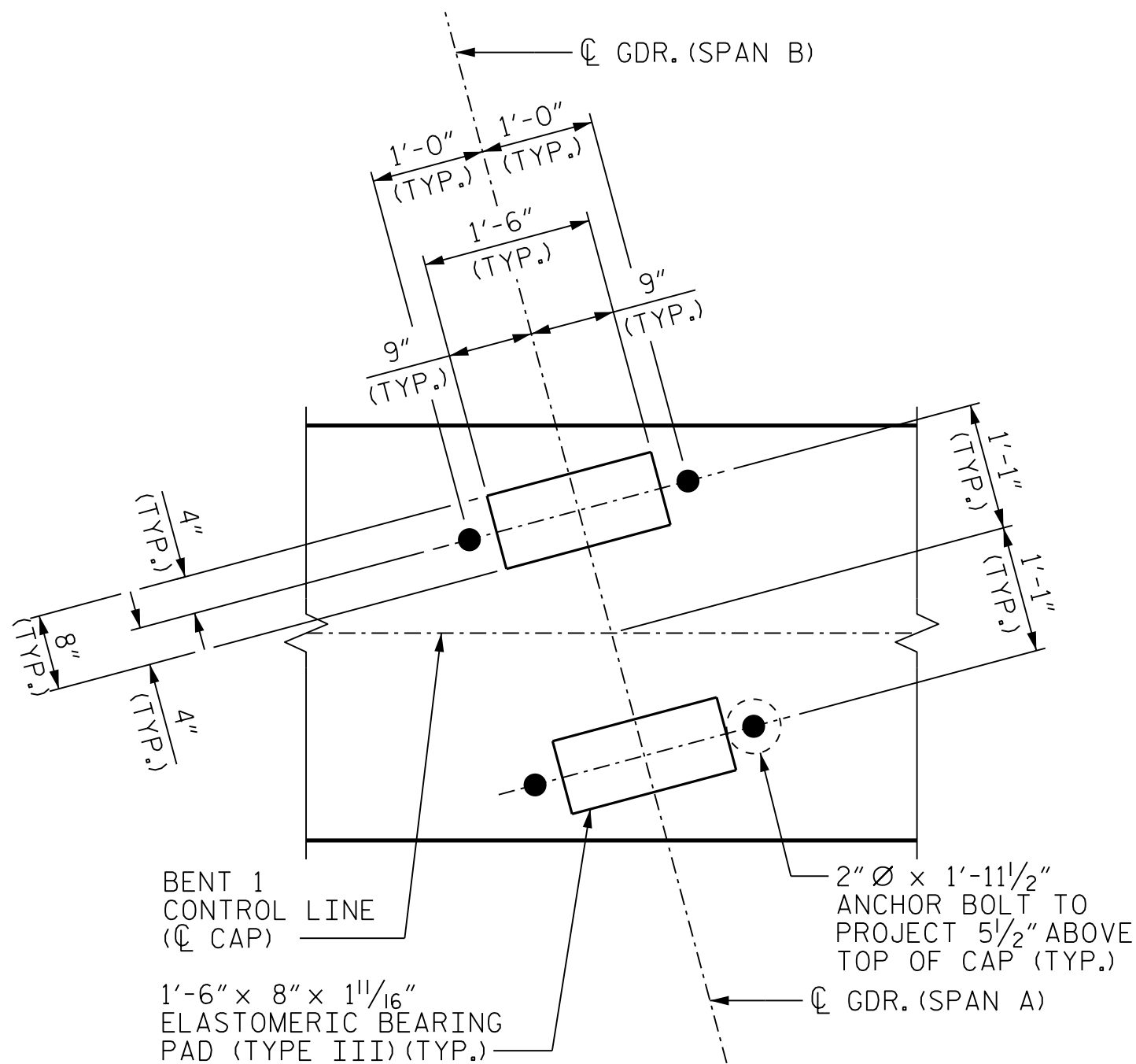
FOR DRILLED PIERS, SEE SECTION 411 OF THE STANDARD SPECIFICATIONS.

ALL STEEL IN THE DRILLED PIER IS INCLUDED IN THE PAY ITEMS FOR "REINFORCING STEEL" AND "SPIRAL COLUMN REINFORCING STEEL".

THE CONTRACTOR'S ATTENTION IS CALLED TO THE FACT THAT THE LONGITUDINAL REINFORCEMENT FOR THE DRILLED PIER IS DETAILED WITH 3 FEET OF EXTRA LENGTH.

FOR SECTION THRU CAP, END OF CAP VIEW AND END ELEVATION SEE SHEET 2 OF 2.

INVERT ALTERNATE PAIRS OF STIRRUPS.

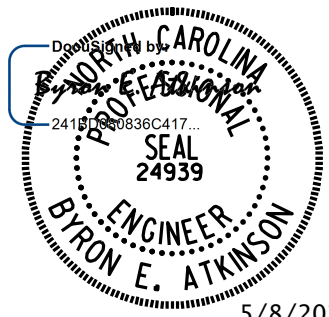


DETAIL "A"

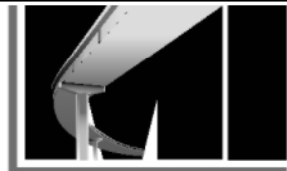
(DIMENSIONS ARE TYPICAL EACH BEARING)

PROJECT NO. BP14.R041
POLK COUNTY
STATION: 20+97.50 -L-

SHEET 1 OF 2



DOCUMENT NOT CONSIDERED FINAL
UNLESS ALL SIGNATURES COMPLETED



MI ENGINEERING
1011 SCHAUB DRIVE, SUITE 100
RALEIGH, NC 27606
(919) 851-6606
FIRM PE NUMBER : P-0671

STATE OF NORTH CAROLINA
DEPARTMENT OF TRANSPORTATION
RALEIGH
SUBSTRUCTURE
BENT 1
PLAN AND ELEVATION

REVISIONS						SHEET NO.
NO.	BY:	DATE:	NO.	BY:	DATE:	
1			3			S-22
2			4			

TOTAL SHEETS
29

DRAWN BY : B.E. LANNING DATE : 03/25
CHECKED BY : B.E. ATKINSON DATE : 03/25
DESIGN ENGINEER OF RECORD : B.E. ATKINSON DATE : 04/25